



**Size:** UK 10 (14) - US 6 (10) - EU 36 (40)

**Note:** figures in brackets ( ) refer to larger size.

Where only one figure is given this refers to both sizes.

**Skill Level:** intermediate

**How much yarn:** 9 (11) balls (each ball 50g and 125m) of Super Soft yarn (100% Extrafine Merino Wool), whose 2 balls shade no. 12504 light grey, 3 (4) balls shade no. 14126 medium grey, and 4 (5) balls shade no. 20206 dark grey

**Needles:** A pair of 5.00mm knitting needles

**Sewing needle:** Yarn needle with rounded point

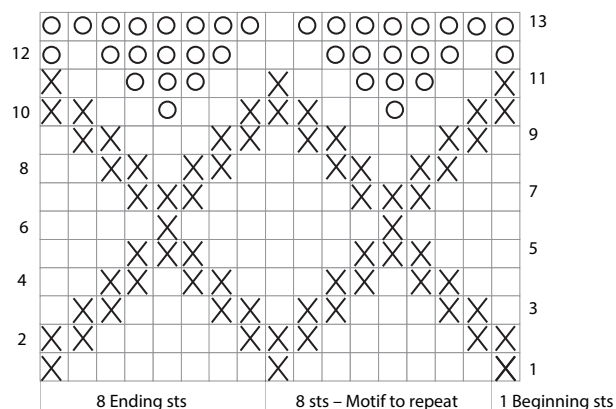
## STITCHES

**Using needles:** tubular stitch - K2, P2 rib

**STOCKING STITCH (ST ST):** 1 row K (RS), 1 row P (WS).

**FAIR ISLE STOCKING STITCH:** work in stocking stitch, following Chart and Key. Use a ball for each colour, twisting yarn on WS to avoid holes when changing colours.

FAIR ISLE MOTIF



1st variant

- = 1 stitch in st st with dark grey yarn
- = 1 stitch in st st with light grey yarn

2nd variant

- = 1 stitch in st st with medium grey yarn
- = 1 stitch in st st with dark grey yarn

- = 1 stitch in st st with medium grey yarn

Each square corresponds to 1 stitch and 1 row.

- = 1 stitch in st st with light grey yarn

Each square corresponds to 1 stitch and 1 row.

## TENSION

17 sts and 24 rows measure 10cm square over stocking stitch with 5.00mm needles. Take time to

check tension before starting work: it is essential to work to the stated tension to achieve success.

## INSTRUCTIONS

**Back:** with 5.00mm needles and dark grey yarn cast on 74 (82) sts. For small border work 6 rows in tubular st, corresponding to 1cm. Cont to work in st st until work measures 58 (62)cm from border, then cast off.

**Front:** with 5.00mm needles and dark grey yarn cast on 74 (82) sts. For small border work 6 rows in tubular st, corresponding to 1cm. Cont to work as follows: 42 rows in st st with dark grey yarn (decreasing 1 stitch across first row), 13 rows in Fair Isle st st 1st variant, 38 rows in st st with medium grey, 13 rows in Fair Isle st st 2nd variant, and continue in st st with light grey until to end. At the same time, when Front measures 52 (55) cm from border, shape neck: cast off centre 19 (23) sts, join another ball of yarn and cont separately on either side. On neck edge of either side cast off 2 sts, then dec 1 st every alternate row 4 times. When neck shaping measures 6 (7)cm from beg, cast off for each shoulder rem 21 (23) sts.

**Sleeves:** with 5.00mm needles and dark grey yarn cast on 36 (40) sts. For cuff work 5cm in K2, P2 rib. Cont to work as follows: 39 (41) rows in st st with dark grey yarn, 13 rows in Fair Isle st st 1st variant (across 1st row dec 1 st for 1st size and inc 1 st for 2nd size), cont to work in st st with medium grey yarn until to end. At the same time, inc at each end 1 st every 10th row 10 (11) times. There are 55 (63) sts. When Sleeve measures 45 (49)cm from cuff, cast off all the sts.

## FINISHING

Sew a shoulder seam. **Polo-neck:** with RS facing, light grey yarn and 5.00mm needles, pick up and K the sts around Front and Back neckedge. Work 16cm in K2, P2 rib, then cast off in rib. Sew other shoulder and neck seam. Set in sleeves. Sew sleeve and side seams.

**Note:** wash garment carefully at low temperatures, with a very little fabric softener. Lay the garment to dry on a flat surface, without ever hanging it.